

# FAO

Fiber Artists of Oklahoma

Newsletter for March, 2013  
Volume VIII Issue 7

## FAO Officers

### President:

Kay West

### Tulsa Moderator:

Debbie Ross

### Treasurer:

Barbara Klein

### Newsletter Editor:

Kate Kline

### Programs:

OKC . Committee

Tulsa . Michele Lasker

Peggy Fry

### FiberWorks Chairman:

Pat Brant & Debbie Ross

### Membership:

Karen Rose

### Tulsa Secretary:

Lyn Lucas



I let all my art and fiber magazine subscriptions lapse since I was unemployed for awhile so I've really been out of touch. I found a wonderful website tonight that really got me inspired. I'm sure all of you fiber enthusiasts are already aware of <http://fiberartnow.net/> but if you aren't check it out. Fiber Art Now has a partner website that is also awesome, <http://www.fibermixedmedia.com/>.

My husband and I bought a house today and will be moving this weekend. In the process of packing and going through my storage unit I realized the house isn't going to be large enough! I had forgotten how much art stuff I have accumulated over the years. I need to pass it along to people that are just getting started and still in the collecting stage. Please, let me know if any of you are interested.

Kay West, President

### Treasurer's Report

No report this month

**Membership Report** No new members reported in February

## Editor's Report

I'm keeping busy as Publicity co-chair for FiberWorks 2013 coming up. Which tells me that I'm overinvolved in Fiber Artists of Oklahoma. This will be my last year as editor of the newsletter. My last issue is the one for August. If anyone loves doing newsletters, has some skills with graphics, and enjoys getting to know the members from all over Oklahoma, we're recruiting you.

## Programs for March

Tulsa meeting on March 12, 2013 at B-Sew-Inn from 6 pm to 8:30 pm

Michele Lasker will present a program on batik and share ideas and inspirations gained from classes on batik and from historical perspectives. Michele will show a presentation using Internet resources that focus on ancient and contemporary designs in batik, supplies that are needed and where to get them, and museums that showcase textiles created with batik. Batik is a very exciting medium to work with and soy wax batik has made working with batik so much easier. The pros and cons of soy wax versus paraffin and beeswax will also be explained.

OKC Chapter Program, March 14, 2013

7 pm to 9 pm at Belle Isle Library

### Surface Design in Art Quilts: A Dozen Techniques for Textiles

There has been a change in our March program. We're very fortunate that the very talented art quilter Janice Filler has graciously volunteered to step in at the last moment. Janice has only been entering FiberWorks for a few years, but we have all watched her very individual and always-evolving work with admiration. Janice's program is sure to be lively and interesting, so don't miss it! Here is the information she sent us: "I've had a lifelong interest in art, but little time in my adult life for formal training in painting or drawing. So, after retirement from a career in medicine, I found my creative comfort zone in quilting, being a long-time sewer. However, after making a single traditional quilt, I turned to making art quilts and never looked back. My process has evolved slowly, gathering experience with various surface design techniques. I love using multiple techniques in each piece, and like to build the image in layers. I've always been intrigued by unusual or double meanings of common words, and inspiration often comes from words, especially favorite quotes, or by giving "titles" to images in my mind. Frequently, the title comes first and leads to the form of the work itself. Some of my favorite techniques are raw-edge appliqué, especially by layering fabric scraps under tulle, digital imagery, screen-printing and stamping, enhancement with colored pencil, inks, and water-soluble oil crayons, curved piecing, free-motion embroidery and free-motion quilting. I am a

member of the Studio Art Quilt Associates (SAQA) and state representative for Surface Design Association (SDA).

Beginning with definitions of "surface design", I will discuss 12 techniques that I use in creating my art quilts, and show examples of the tools I use as well as some of the projects. I've completed as demonstrations of those techniques."

## **FEBRUARY HAPPENINGS**

### **Oklahoma City Chapter, February 14<sup>th</sup> Meeting Notes**

In the absence of President Kay West, Stephanie Grubbs led our meeting. Treasurer Barbara Klein reported that she had sent payment for the plane tickets for the juror for Fiberworks 2013, which will be held in Tulsa next summer. Stephanie told the group that Sue Sullivan, who had arranged our program for the evening, would not be present because of the sudden death of her sister earlier in the week. We all send Sue our deepest sympathy.

#### **Program:**

We were treated to a fascinating program by Anne Murray Chilton, owner and Senior Textile Conservator of Murray Conservation Services in Oklahoma City. Anne discussed the training of textile conservators and the types of work they do. Restoration of a textile piece is usually a multi-step scientific process, and each step must be meticulously documented in writing and with photos. She then showed slides of fascinating and varied projects on which she had worked for the Smithsonian and also at the National Park Service Civil War site at Harper's Ferry, West Virginia.

At the Smithsonian she helped with the restoration of the very fragile Star Spangled Banner, a fifteen-year project. The conservators had to remove a backing fabric which had been added in a much earlier restoration project. Anne commented that modern conservation work must be reversible, so that in the future, more advanced techniques may be applied. The fragile fabric had to be cleaned, and conservators made a sheer polyester support, then attached it to a Kevlar material used in racing yachts.

Another flag project was the Civil War banner of the First Georgia Regulars, on display at Ft. Pulaski, Georgia. Anne explained that old silk becomes so brittle that the paint from a design becomes too heavy and the painted portion often falls out of the piece. The painted center image in this flag was missing, and it took some guesswork before it could be recreated and restored.

One of the most interesting projects in the slides was work on a Confederate coat from the Battle of Gettysburg, a project that took over 500 hours of work. The work involved custom-dyeing pattern pieces and making a support fabric to go underneath the coat. The last step was to construct a custom vest from a thick material similar to batting. This vest would remain under the coat while it was displayed on a mannequin and afterward, when it would be put into storage. One of the most harmful effects of storage on textiles is the tendency to create creases. The support fabric and the vest help to prevent such creases.



The challenge word for last month was "Really" - those that made and showed 12" X 12" pieces were Kate Kline, Sharon Thompson, Debi Pickens, Pam Bartlett, Peggy Fry, Sheryl Miller, Rita Barnhart, and Sandi Thomas.

The challenge word for March is "Creative", pieces should be no larger than 12" x 12" x 12+.

Jeanie Weber presented a very informative and fun program on pine needle baskets. She recommended for those interested in further study *Pine Needle Basketry: From Forest Floor to Finished Project* by Judy Mallow and Judy's website is [www.primpines.com/](http://www.primpines.com/). Jeanie also recommended are *500 Baskets: A Celebration of the Basketmaker's Art* by Lark Books and *Pine Needle Raffia Basketry* by Jeannie McFarland. There is also an online Yahoo group for pine needle basketmakers.

Show & Tell: Debi Pickens shared her monster themed quilt for her new granddaughter who is arriving soon.

Kate Kline, had a decorated guitar called Lucille and black and white challenge of 3 fish on stands. Sandi Thomas had a soft sculpture featuring black gloves that formed a vase with dyed fabric flowers. Sharyl Landis had a mixed media piece featuring corrugated cardboard stretched and tacked to a barn wood frame backed by fabric that had been beaded and painted. The piece was finished with several 5-strand braids woven through the cardboard.

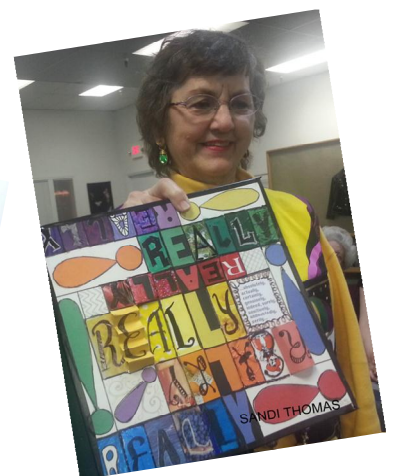
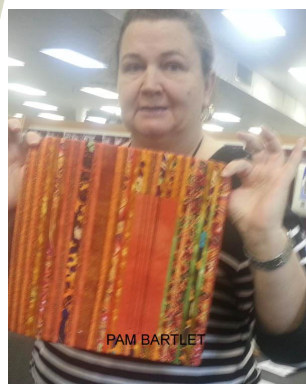
Jan Hawks showed a piece crocheted using very large cord from a class she attended at AHHA called ~~M~~Mega Crochet.+

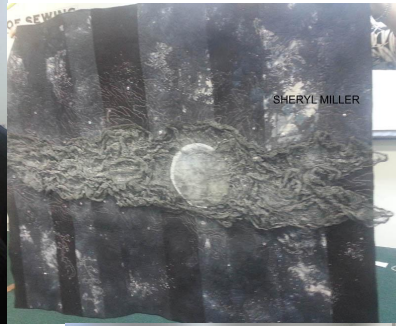
Peggy Fry had two quilts that had been displayed at the Southwood Show and the other quilt represented the ~~ce~~stless+ribbon that was Peoria Avenue.

Sheryl Miller had a black, charcoal and white quilt for the black and white challenge.

Jan White shared her hand constructed paper doll.

Janet Hoeltzel had 2 black and white quilts for the black and white challenge.





## CALLS FOR ENTRIES



### EdgeArt Now Call for Artists

Edge Art Now 2013 is Individual Artists of Oklahoma's 22nd annual juried exhibition of selected mixed and new media works.

For this exhibition, "mixed media" is defined as two or more distinct-unquestionably and readily distinguishable-media in one art piece. (For example: working in two different painting media such as watercolor and oil will not constitute mixed media.)

IAO uses the term "new media" to refer to artwork created using advances in technology. IAO wishes to celebrate and encourage fresh-original and ambitious- approaches to creation of art. Some more familiar examples include biotechnology, computer graphics, interactive hypermedia (as demonstrated on the Internet), and robotics. Resulting artwork might range from conceptual to virtual.

For more information, visit [here](#) or call 405-232-6060.



## Sit. Stay. Art! Call for Entries

Sit. Stay. Art! is a unique collaboration between local artists and humane organizations in an effort to bring awareness to the community about pet overpopulation and adoption. Sit. Stay. Art!'s primary goal is to help find loving, forever homes for the pets awaiting adoption at the Pets & People Humane Society, and to help raise funding for Pets & People to aid in their operations.

This year Pets & People wishes to raise awareness about pet overpopulation and to increase community awareness about the importance of spaying or neutering pets. We invite you, the artist, to participate in this project by portraying a homeless pet through visual art and then to donate part or all of the sale of your work to benefit Pets & People Humane Society.

**The deadline for submissions is May 20. The show will take place at the IAO Gallery on June 1. For full call for entries, visit [here](#).**

---

**Call for Artists:** The 5th Annual Arts on the Avenue Festival will be held from 12:00 p.m. - 8:00 p.m. on Friday, June 7th and 10:00 a.m. - 5:00 p.m. on Saturday, June 8th at the Historic Cherokee Capitol Square in Tahlequah, OK. The festival showcases regional artists, blending both Native artists and non-Native which is the rich history of NE Oklahoma. The festival offers artists outdoor space 10x10 booths. We are accepting all mediums of art. Art can be traditional or contemporary, of high quality and must be handmade. In order to assure the highest quality of art, all pieces will be juried. **Deadline:** Completed application and images for submission in .jpg / .tif formats by email (300 dpi or above, image should be no larger than 5 MB), or 4 x 6 photographs via mail need to be postmarked or received by May 10, 2013. Notification of acceptance will be sent out by email. Artwork is juried as it is received. For more information about Arts on the Avenue and for artist applications, visit [www.artsontheavenue.net](http://www.artsontheavenue.net) or contact Andria Hummingbird at 918-453-5728 or [andria-hummingbird@cherokee.org](mailto:andria-hummingbird@cherokee.org)

## UPCOMING SHOWS

### LESLIE POWELL FOUNDATION AND GALLERY

#### *Public Event--Opening of an Art Show:*

Opening, March Art show

#### *Date and time:*

Saturday, March 9, 2013

7:00-9:00 P.M.

(Hangs through April 26, 2013)

**Location:**

**Leslie Powell Gallery**

**620 SW "D" Ave**

**Lawton, Oklahoma 73501**

**Artists and Titles**

Oil Paintings

**Clare Stratton, Austin, TX      "Fresh Perspective"**

Fiber Works

**Jean Fausser, Tulsa, OK      "Elemental"**

Photographs

**Randi Dettling, Cottage Grove, MN      "Escape: A Thai Adventure"**

Join us for our  
**Grand Opening**  
in our new home

108 E. Brady Tulsa, OK • The Brady Arts District

**Tapestries of Jon Eric Riis**  
March 1-April 21, 2013

Members Only Opening Reception, March 1, 5-6PM  
Opening Reception Friday, March 1, 6-9 PM  
Artist Talk Saturday, March 2, 1-3 PM

**108 CONTEMPORARY**

Icarus #2  
Jon Eric Riis  
Brady Craft Alliance re-imagined

*Art. Craft. Design.*  
108contemporary.org

*Refreshments served, Public is invited and it is always free of Charge!*

**Gallery is open Monday through Friday**

**12:00-4:00**

## OTHER ITEMS OF INTEREST



The Oklahoma Visual Arts Coalition invites you to the Tulsa Art Studio Tour April 20-21 and the Preview Exhibition opening March 7!

### Preview Exhibition

Enjoy art by Tulsa Art Studio Tour artists along with food and drinks.

Opening Reception: March 7, 6-8 pm  
Circle Cinema Gallery, 12 S. Lewis Ave., Tulsa  
Free and open to the public.

Exhibit continues through April 17.

### Tulsa Art Studio Tour

The self-guided journey features 10 artists in 9 working studios around the city.

Saturday & Sunday, April 20-21, Noon-5 pm  
\$5 in advance or \$10 at the studio door

### Artists

Janet Fadler Davie, Painting  
Val Esparza, Fashion & Screenprinting  
Grace Grothaus, Back-lit Painting  
Nicole McMahan, Installation & Design  
Mary Jane Porter, Mixed Media & Puppets  
Michael Sexton, Metal Sculpture  
Andrew Storie, Sculpture  
Steve Tomlin, Painting  
Kathy Wills, Jewelry  
Richard Wills, Printmaking

[www.TulsaArtStudioTour.org](http://www.TulsaArtStudioTour.org)

The Winter 2012/2013 edition of Shuttle, Spindle & Dyepot, magazine of the Handweavers Guild of America, has a wonderful review of "Innovators and Legends: Generations in Textiles and Fiber." The exhibit features 50 fiber artists; among them are 3 former Fiberworks' jurors: Tom Lundburg, Jiseon Lee Isbara, and Ilse Aviks. All FAO members should be so proud that we have always had nationally and internationally known fiber artists to jury our exhibit and enrich our lives with their knowledge and expertise.

Also included is Maggie Casey, a young artist who had an amazing exhibit in 2011 at City Arts Center, OKC. Unfortunately, it can't be read online, but can be ordered online: <http://www.weavespindye.org/pages/?loc=1-60-00&p=cover.html>



## ABOUT US:

Fiber Artists of Oklahoma (FAO) is made up of individuals interested in sharing knowledge and promoting appreciation of all aspects of fiber art, including weaving, spinning, embroidery, basketry, felting, papermaking, dyeing, rug hooking, lace-making, beading and quilting. Skill levels of members range from novice to expert, with some members experimenting as hobbyists, and others working as professionals

Members of FAO participate in various activities during the year to encourage, support, and inform persons interested in fiber art. The organization promotes FiberWorks, a major juried fiber art show featuring Oklahoma artists. Held each year, Fiberworks is now a nationally respected fiber show.

Fiber Artists of Oklahoma was formerly the Handweavers League of Oklahoma, the name chosen in 1976 by a group of hand weavers who first met in Norman, Oklahoma. Officers were elected, by-laws were written and the first newsletter was published. In 1984 the group began meeting in Oklahoma City and became a statewide organization. A Certificate of Incorporation to become a non-profit {501©(3)} group was filed and approved in 1985. In 1978, the organization initiated FiberWorks, a major juried fiber art show that has been held each year since. The Handweavers League was renamed Fiber Artists of Oklahoma in 2006 to better reflect the broader focus of the organization. A Tulsa group was formed in 2008.

We Are On The Web!

[www.fiberartistsok.org](http://www.fiberartistsok.org)

<http://fiberartistsok.org/blog/>

FAO membership dues run from September . August each year. Dues are \$20; please make checks payable to Fiber Artists of Oklahoma and mail to Barbara Klein, 6904 N. Grove Ave., Oklahoma City, OK 73132. For questions call 405-728-2200